

SCADTECH

Group of Companies

MODULAR MOBILE HOUSES
FOR HOSPITALITY AND TOURISM



www.scadtech.ru



Message from the President of the SCADTECH Group of Companies.

Behind the shoulders of the SCADTECH group of companies are more than 17 years of successful work in the field of automotive industry and automation of industrial processes in the oil and gas industries.

The SCADTECH group of companies has a strong position in the market and has been reliable for a long time a partner for both the largest Russian corporations and leading European vendors.

Using detailed technologies for the production of block containers for the Oil and Gas Industry and taking into account the growing popularity of a new type of recreation - mobile house or glampings, we organized the production of mobile house at our enterprise.

Our MOBILE HOUSES is a rapidly growing trend of a new object of hotel service and tourism. We offer a turnkey integrated solution.

Our design department will help you create a unique, individual object from a conceptual design to a detailed working draft.

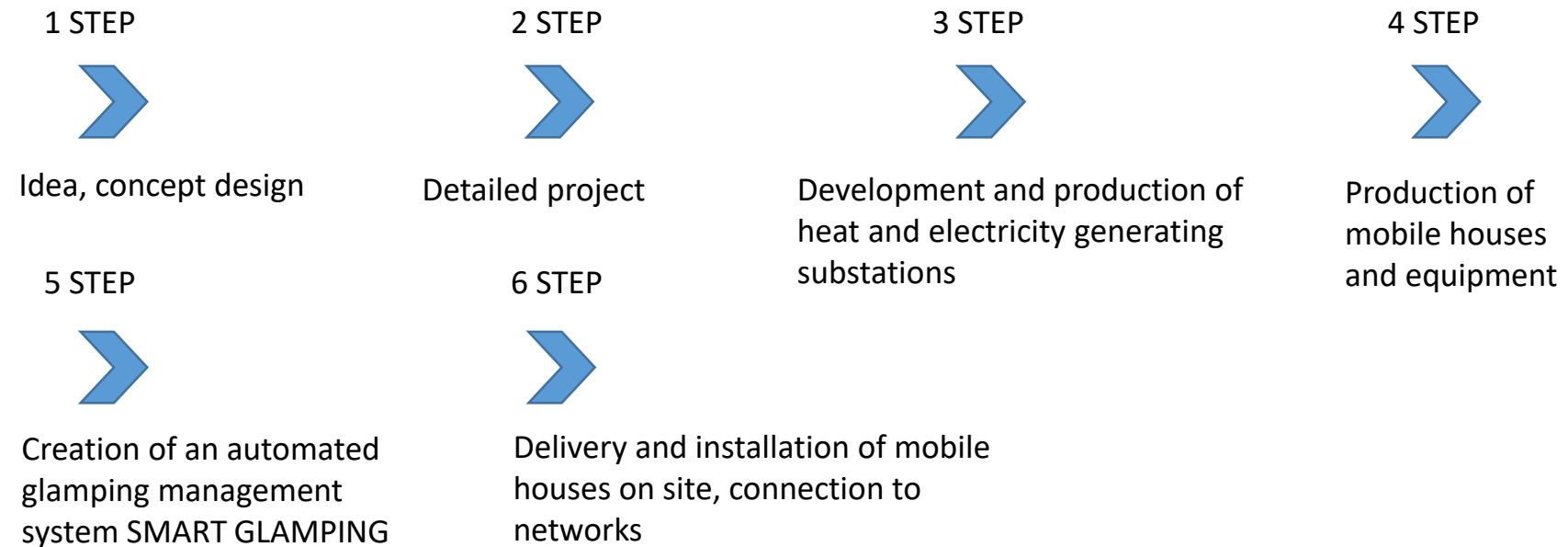
Our division will help equip your facility with an automated control system that will allow you not only to remotely control engineering and security systems, but also provide the opportunity for contactless check-in of guests.

We offer a new high-quality product that can be adapted to individual requests and customer needs in the shortest possible time.

We know the solution to how your business can become even more successful.

The SCADTECH group of companies presents a unique integrated solution that allows you to quickly increase the existing number of rooms, as well as the opportunity to implement a new tourist destination in nature, a yacht or golf club, a ski resort or a holiday village on the sea coast, in a river bend or just in a beautiful natural place away from the noise of the city, but at the same time retaining all the comforts and conveniences inherent in city life.

We offer you a complete solution for your business in just three simple steps.





1 STEP

Idea, concept design

The concept of the project begins with an analysis of the site / real estate, determining the tourist flow and potential, the composition of services, the level of occupancy, and assessing the volume of investments in the hotel complex being created.





2 STEP

Our design department will help you create a detailed working design

- 3D visualization
- landscape design project of the site
- architectural design of buildings
- interior design project
- engineering solutions for connection to systems
- ground parking project
- external lighting project
- project of signaling and security systems
- heat and power generation project

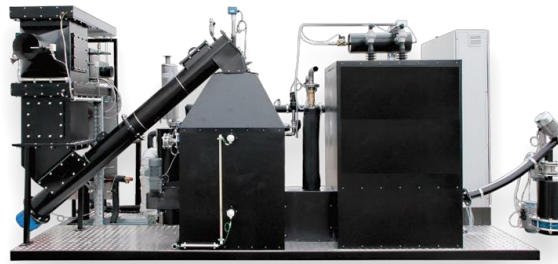


➤ 3 STEP

We will be able to equip mobile hotel complexes with heat and power generating substations for fully autonomous operation of the facility.



Following our engineering experience, if necessary, SCADTECH can develop, produce and provide autonomous sources of electricity and heat (hot water) for glamping and hospitality infrastructure.





4 STEP

Production of mobile modular houses

We will produce for you a ready-made modular mobile hotel complex, with completed interior finishing work, with ready-made engineering in-house systems, with installed furniture and appliances.





5 STEP

We will develop and install a smart glamping system for you, with the help of which:

- operation of the facility in semi-automatic mode
- remote control of engineering systems
- remote control of security systems
- contactless check-in of guests
- contactless provision of hotel services
- concierge service





6 STEP

Delivery of modular mobile houses of a residential complex

Installation of house modules at the installation site and connection to engineering systems



OUR ADVANTAGES

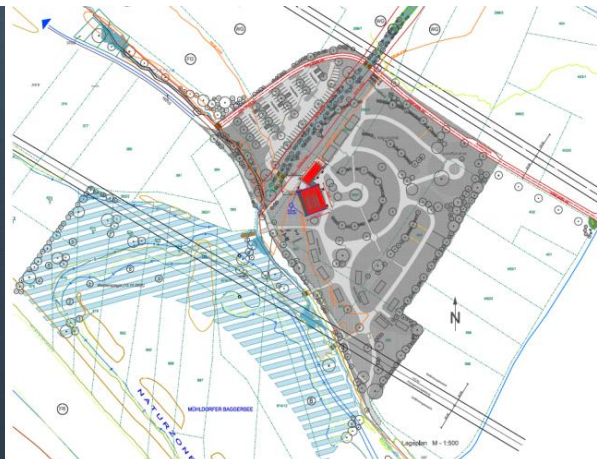
- ✓ We provide a comprehensive solution for your project: from the master plan for the development of the site to the assembly and installation of turnkey houses;
- ✓ The model of our MOBILE HOUSES is designed taking into account the various climatic conditions of Russia and Europe, has high energy efficiency, is designed for year-round use and, thanks to modern solutions, allows you to significantly save on maintaining a comfortable temperature inside the house;
- ✓ When creating a house, our designers focused on the most modern trends in European architecture, so the model has a minimalist design and high functionality, the house is assembled in 24 hours;
- ✓ We will deliver houses to any, even a hard-to-reach place, transportation of houses is possible by various means of transport, including air and water;
- ✓ We provide a wide range of services after the opening of a mobile hotel complex, including the supply of additional furniture, the possibility of changing and other transformations of mobile houses, moving the hotel complex to another location, both in whole and in part.

OUR PROJECTS

Glamping Mühldorf Spittal an der Drau, Carinthia, Austria Opening: 2022

Project description:

Glamping Mühldorf is well integrated into the unique hilly landscape of the Carinthian Spittal an der Drau. This is a perfect place to relax. Glamping consists of 30 self-catering cabins with the capacity to accommodate up to 6 people and 70 places for camping vehicles. The glamping has a developed infrastructure, including the main building with a large cozy hall for guests, a restaurant, a bar, changing rooms and showers, as well as outdoor areas for guests to relax.



OUR PROJECTS

Nizhny Novgorod region, Gorky reservoir

Yacht Club

At the design stage.

Opening: 2023



Krasnodar Territory, Adlersky District

Ski resort

At the design stage.

Opening: 2023



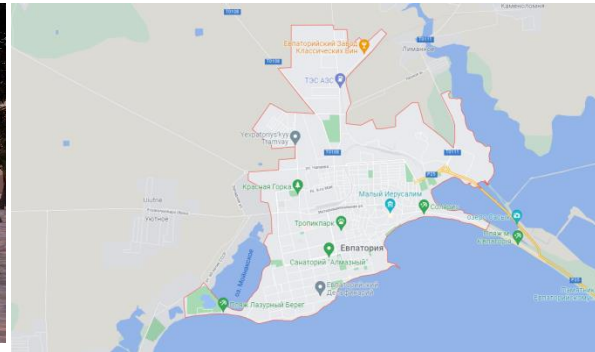
OUR PROJECTS

Crimean peninsula, Evpatoria

Glamping

At the design stage.

Opening: 2023



Tver region, Konakovskiy district

Glamping

At the design stage

Opening: 2022-2023



WHAT WE PROPOSE:



Should you choose finishing from dry siberian pine or thermo treated linden **with our mobile house you will always get premium.**



Our mobile houses are fully equipped with all needed utilities, engineering systems and furniture. **We deliver and install on-site.**



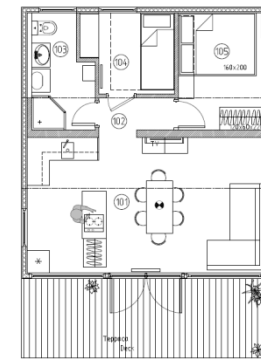
BASIC MOBILE HOUSES (EXTERIOR)

MH 45 (sleeps 6)

Description:

- A modular one-storey house with a total area of 45 m² is designed for living from 1 to 6 people. Modular house consists of three separately transportable modules and an outdoor veranda. The height of the modules is 2.9 m with a ceiling height of 2.4 m. The modules are joined together at the place of installation of the building, and the building is connected to the existing communications. The modules are delivered to object in full factory readiness.
- The design of each module consists of a welded steel frame with an anti-corrosion coating. Outside the walls there is a wooden planken on a sheathing of OSB3 12 mm. The walls consist of a windproof membrane, basalt thermal insulation boards, a vapor barrier membrane, and interior finishes. Systems of power supply, water supply and the sewerage in the hidden execution.
- Floors - moisture-resistant laminate or parquet board over a leveling base of cement-bonded particle boards on a power steel frame with basalt insulation. The bottom is made of metal profiled sheet with anti-corrosion coating.
- The roof is welded from steel sheets 1.5 mm thick on a steel load-bearing frame with anti-corrosion coloring and decorative, anti-noise coating with flexible roof tiles. Stretch ceiling or dry ceiling boards with painting.
- From the side of the facade of the building there is an open veranda with dimensions of 6.6x2.1 mm with marquise. Veranda floor covering - is a wooden terraced board on the metal frame.

A swimming pool is not included



BASIC MOBILE HOUSES (INTERIOR)

MH 45 (sleeps 6)

Description of interior design:

- Living room: Sofa, Dining table, Dining chairs 6 pcs., Wardrobe
- Bedroom 1: Bed with lifting mechanism 160*200, Mattress 160*200 Wardrobe
- Bedroom 2: Double bed with mattresses 80*200 Wardrobe
- Bathroom: Plumbing equipment installed, Furniture, Shower cabin
- Kitchen: Furniture, Induction hob, Microwave
- Equipment: Common boiler (50 liters) (bathroom + kitchen), Split system, Fan heater, Heated floors in the bathroom, Terrace 2.1 * 6.6



MOBILE HOUSES VARIANTS

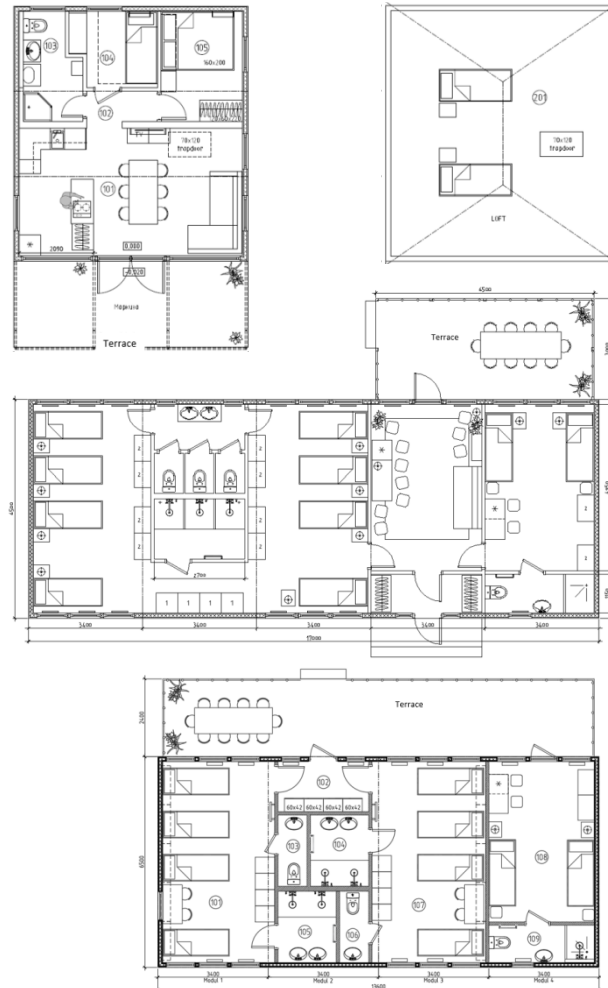
MH 45 (8 beds)



MH 110 (10 beds)



MH 90 (10 beds)



ADVANTAGES OF MOBILE HOUSES

- ✓ They can be installed on a site where capital construction is prohibited, but recreation is allowed for the development of sports and tourism, namely: on forest fund lands, in protected natural areas, in coastal strips.
- ✓ You can not put on the cadastral register, mobile houses will not be taxed as permanent buildings.
- ✓ Do not require a building permit.
- ✓ Easily move from place to place using various modes of transport.
- ✓ A turnkey solution that allows you to receive guests immediately after assembly.
- ✓ Due to serial production at the factory and the minimum amount of installation work at the facility, the cost of m2 of mobile houses is 25-30% cheaper than a full analogue in the case of a permanent structure of the same area, level of finish and configuration.
- ✓ The entire creation cycle from idea to commissioning will take from 6 to 9 months instead of several years compared to conventional, prefabricated houses.
- ✓ The customer does not bear the cost of purchasing and delivering the missing materials to the construction site.
- ✓ In the production of houses, errors are minimized, since the work is carried out according to the approved project by full-time qualified specialists in the factory.
- ✓ Before sending the house, the design and all engineering systems of the house are checked, an act of acceptance tests is drawn up.
- ✓ There are no residues of materials that are present in normal construction conditions and for which the Customer bears the costs, including disposal.
- ✓ Production times are minimal and little dependent on weather conditions.
- ✓ Damage to materials is excluded, as the production is carried out in the factory.
- ✓ There are no high requirements for the base. In addition to traditional solid foundations, there is the possibility of installation on a flat base, such as a roadbed, road slabs, low-buried and block foundations, screw piles, pile foundations.
- ✓ Possibility of installing certain modules in two or more floors.



For additional info please inquire
with our video via link below



129110, Moscow, info@scad.su
16/5 Olympiysky Prospekt

info@scad.su
www.scadtech.ru

+7 (495) 374 80 32